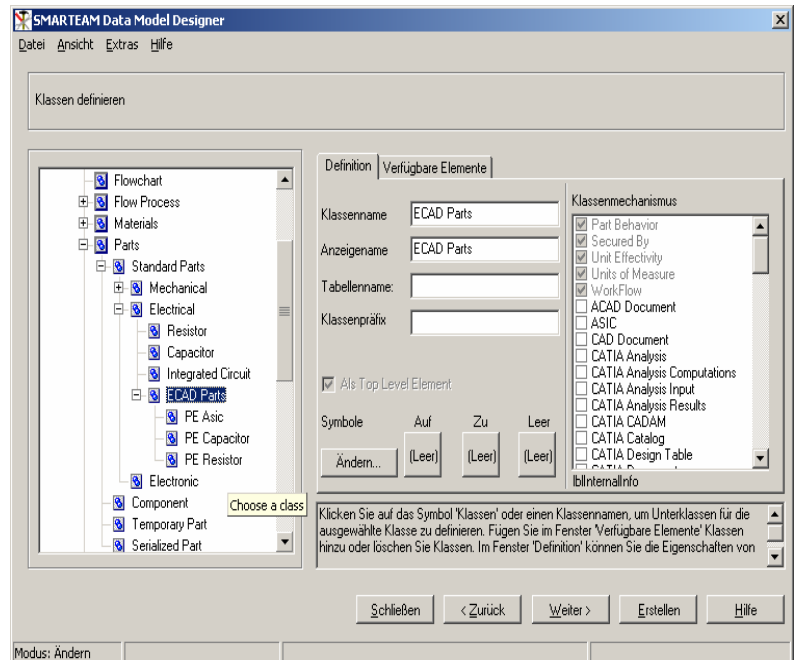


Highlights

- Update the native ECAD library with the latest state, stock and supplier information maintained in the PLM system
- Support the component board process
- Support multiple ECAD environments
- Maintain a single source for component information
- Ensure data integrity between ECAD libraries and the PLM component database throughout the entire design process
- Minimize the efforts when capturing and maintaining component information in both the ECAD and PLM environments
- Minimize the risk entering erroneous component information
- Detect systematic problems from early on
- Support procurement by creating Bill of Materials from the start
- Avoid the creation of erroneous Bill of Materials
- Support the shop floor in long-lead item issues
- Avoid the creation of erroneous BOMs
- Support your component request process in a reliable manner
- Integrate into existing customer specific environments



- Handle different attribute naming conventions and attribute value notations
- Implement policies for:
 - Login and data access
 - Information storage and management
 - Lifecycle and business process management

SMARTEAM ECAD WebAppSuite Librarian handles technical, logistic and business attributes of parts and manages the PLM material classification.

Independent application plug-ins support the component request process, the maintenance of native ECAD libraries, as well as SMARTEAM component database maintenance.

All application plug-ins can be easily customized through configuration scripts according to customer specific component request processes and classification schemas. The plug-ins are batch-executable. They can thus be easily integrated into existing customer environments.



LIB Application

LIB synchronizes native ECAD libraries with component information from the PLM system.

COMP Application

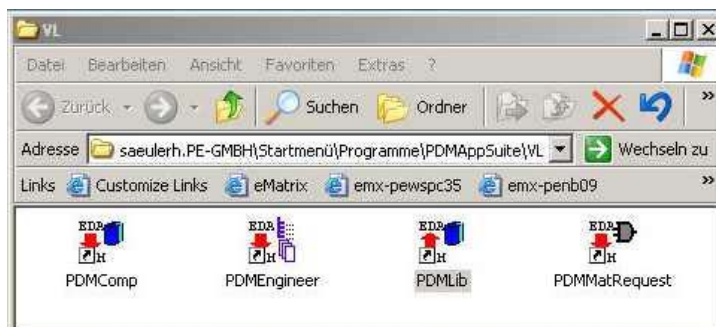
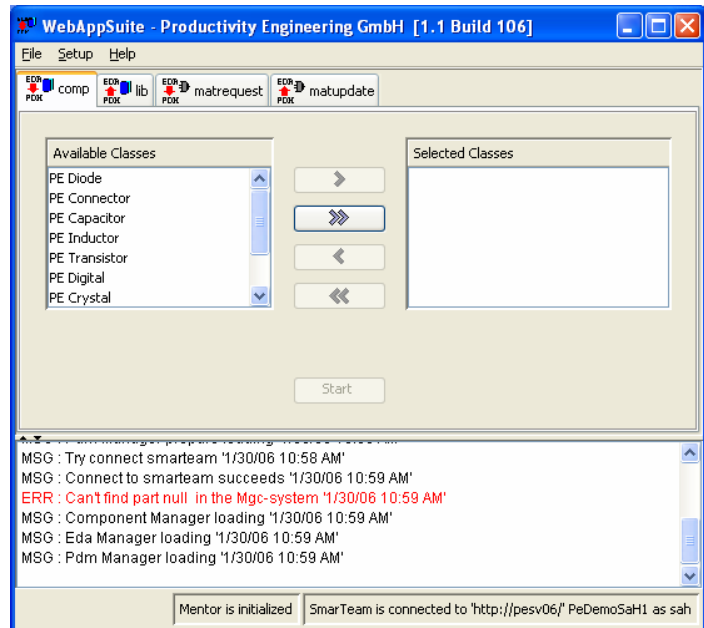
COMP synchronizes the PLM system with the part information from the native ECAD libraries.

MatRequest Application

MatRequest creates preliminary components in the SMARTEAM system part-by-part. It assigns material numbers and translates part attributes of the native ECAD part into the SMARTEAM classification.

MatUpdate Application

MatUpdate publishes single SMARTEAM components into native ECAD libraries.



Related Products

ECAD WebAppSuite Engineer is designed for handling engineering data. Engineering data are typically bill-of-materials and all kind of files. The PLM functionality of the connected PDM system is fully supported, that is lifecycle management, access control, and online checks, and of course vaulting. The Engineer application provides the means to proceed effectively and gradually the development of boards. It is initialised and configured by the task.xml file exclusively. The task.xml is created onto customer's request and can easily be customized on their demands at any time. The Engineer application is usually adapted for the customer.

Product Support

- Mentor Graphics EN (2004/2005/2006)
- Cadence SPB (15.2/15.5/15.7)
- Generic ECAD

SMARTEAM Support

- SMARTEAM V5R14-V17

Platform Support

- Solaris 10
- HP-UX 11
- Windows 2000/XP

Productivity Engineering GmbH, Behringstraße 7, 71083 Herrenberg
T. +49 7032 2798 0 F. +49 7032 2798 29 www.pe-gmbh.com