

SMARTEAM® ECAD WebAppSuite

Generic ECAD Connector



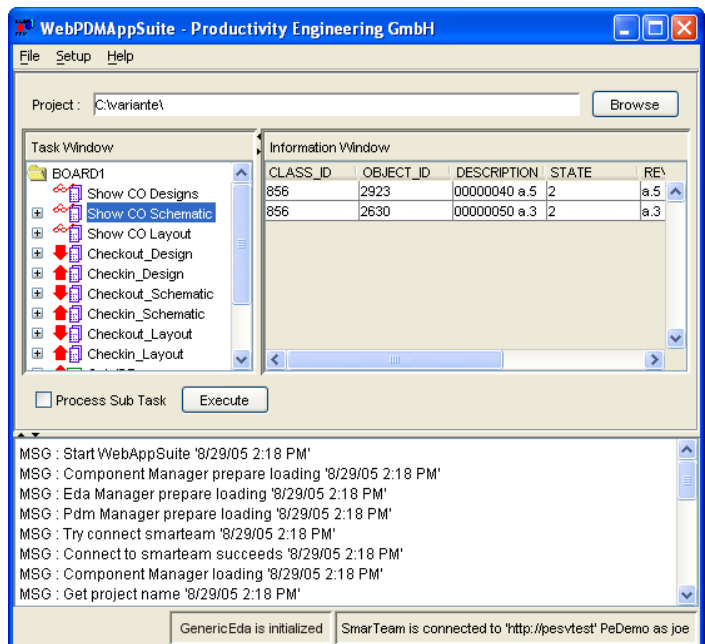
With the Generic ECAD Connector, SMARTEAM WebAppSuite offers the means for SMARTEAM PLM to communicate with ECAD systems that have no ECAD specific connector, or that do not provide any public API to establish an inter-process communication.

SMARTEAM WebAppSuite thereby works as a mediator between both systems. The cyclic transmission of released data, which is checked for transfer, is accurate and reliable. Every event of the data transmission is logged in a log file which can be sent to a specified email address after the session.

The communication is bi-directional. The data will be formatted in a way that they are transferred in a transparent and unambiguous way to the other system and are fully accepted. SMARTEAM WebAppSuite provides the interfaces and adaptation software for the supported ECAD systems and SMARTEAM.

Special Features of WebAppSuite Generic ECAD Connector

- GUI mode
- Client/Server architecture in silent (socket communication) or auto mode (cron-job)
- Configurable document handling
- Configurable component filter handling
- Smooth communication to SMARTEAM
- Simple use of the SMARTEAM Web Services
 - Seamless integration by extended scripting configuration possible
 - Scripts are executed on the server
- Modular structure
 - Plug-ins
 - Encapsulation of the functionality
- Generic ECAD plug-in
 - ODBC interface
 - File system interface



Generic Connector

Using SMARTEAM WebAppSuite with Generic ECAD plug-in provides the means to work on generic ECAD data. The plug-in can read and write the data from the file system.

Name	Größe	Typ	Geändert am
Assembly		Dateiordner	13.02.2007 15:12
Part		Dateiordner	06.02.2007 09:25
Assembly.zip	1 KB	PowerArchiver ZIP File	08.02.2007 16:11
some_name.dxf	0 KB	DXF-Datei	05.02.2007 18:43
some_name.idf	0 KB	IDF-Datei	05.02.2007 18:43
some_name.igs	0 KB	IGS-Datei	05.02.2007 18:43
some_name.jt	0 KB	JT-Datei	05.02.2007 18:43
some_name.pdf	0 KB	Adobe Acrobat 7.0 ...	05.02.2007 18:43
some_name.sat	0 KB	SAT-Datei	05.02.2007 18:43
some_name.stp	0 KB	STP-Datei	05.02.2007 18:43
some_name.wrl	0 KB	WRL-Datei	05.02.2007 18:43
some_name.x_t	0 KB	X_T-Datei	05.02.2007 18:43

A generic ECAD project can be any file system structure or a real ECAD project. The Generic Connector can be used to store any single files or file assemblies in the PLM system like SMARTEAM. That improves the efficiency on working with different files on the file system and allows quick and easy file handling on and off the PLM system. The functionalities are fully configurable. The file assemblies can be automatically zipped checked into the PLM system. Checked in files can be locally deleted after successful check-in.

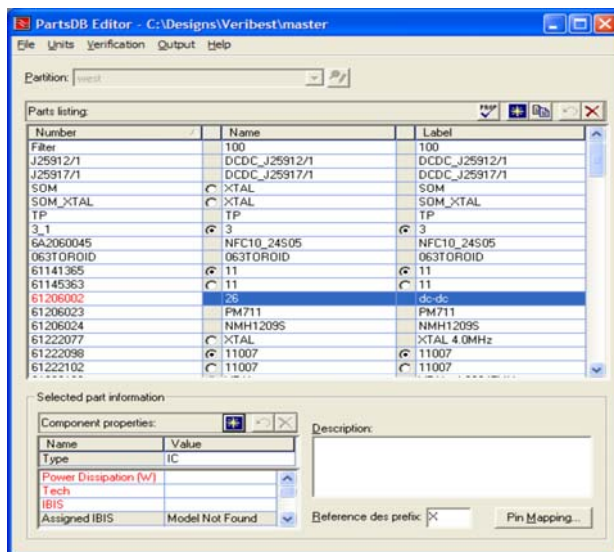
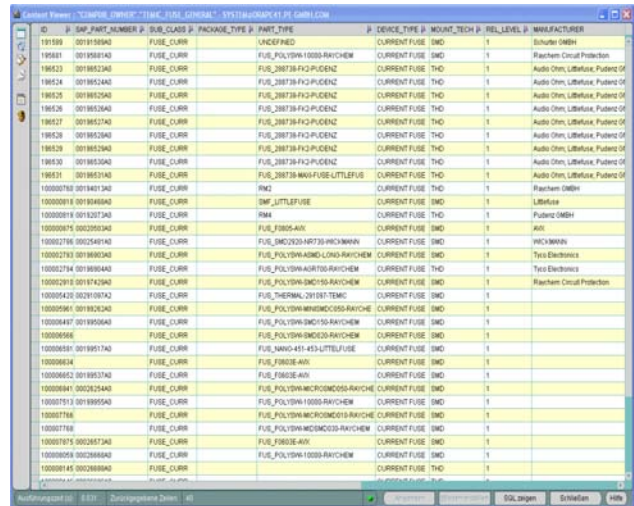
With the Generic ECAD plug-in it is possible to create BOM structures and part lists direct in the PLM system. Generic ECAD supports also design specific BOM transfer and BOM tailoring.

Productivity Engineering GmbH, Behringstraße 7, 71083 Herrenberg
T. +49 7032 2798 0 F. +49 7032 2798 29 www.pe-gmbh.com

ODBC Connector

Using SMARTEAM® WebAppSuite with ODBC plug-in provides the means to allow emulate generic component library database store for a generic ECAD system via ODBC connection. The ODBC connector supports linked table and grants easy and fast data handling.

ODBC Connector can connect to any database with any ODBC driver. SMARTEAM WebAppSuite Librarian provides a setup to customize the behavior of the ODBC Connector.

ID	P	SAMPART_NUMBER	P	SUB_CLASS	P	PACKAGE_TYPE	P	PART_TYPE	P	CURRENT_TYPE	P	MOUNT_TECH	P	REL_LEVEL	P	MANUFACTURER
191599		00195810		FUSE_CURR		UNDEFIN				CURRENT FUSE		EMD		1		Schuster GmbH
191581		00195810		FUSE_CURR		FUSE_POLYDIN1000B-RAYCHEM				CURRENT FUSE		EMD		1		Raychem Circuit Protection
196423		00195820		FUSE_CURR		FUSE_280738-FI2-PUENZ				CURRENT FUSE		THD		1		Audio Ohm, Libratex, Pastecor Of

The Setup allows settings of set any JDBC drivers and protocols. There can be also set the table mapping information like part number field or the link table name. Additionally the quotes for the statements can be defined. This all makes the ODBC Connector highly customizable.

Related Products

SMARTEAM ECAD WebAppSuite Librarian ensures data integrity of components, parts lists and documents between ECAD libraries and SMARTEAM's component database throughout the entire design process. The information is maintained and updated centrally and synchronized on a regular basis. Its straightforward interface handling with data access and exchange makes required data quickly and easily available.

SMARTEAM ECAD WebAppSuite Engineer is designed for handling engineering data. Engineering data are typically bill-of-materials and all kind of files. The PLM functionality of the connected PLM system is fully supported, that is lifecycle management, access control, and online checks, and of course vaulting. The Engineer application provides the means to proceed effectively and gradually the development of boards. The configuration is configured and is created onto customer's request and can easily be customized on their demands at any time. The Engineer application is usually adapted for the customer.

Intended Use

- OrCAD CIS
- Pads
- Protel
- Altium
- Cadstar
- SuperMax
- Zuken CR5000
- ...

SMARTEAM Support

- SMARTEAM V5R14-V5R17

Platform Support

- Solaris 10
- HP-UX 11
- Windows 2000 SP4
- Windows XP SP2