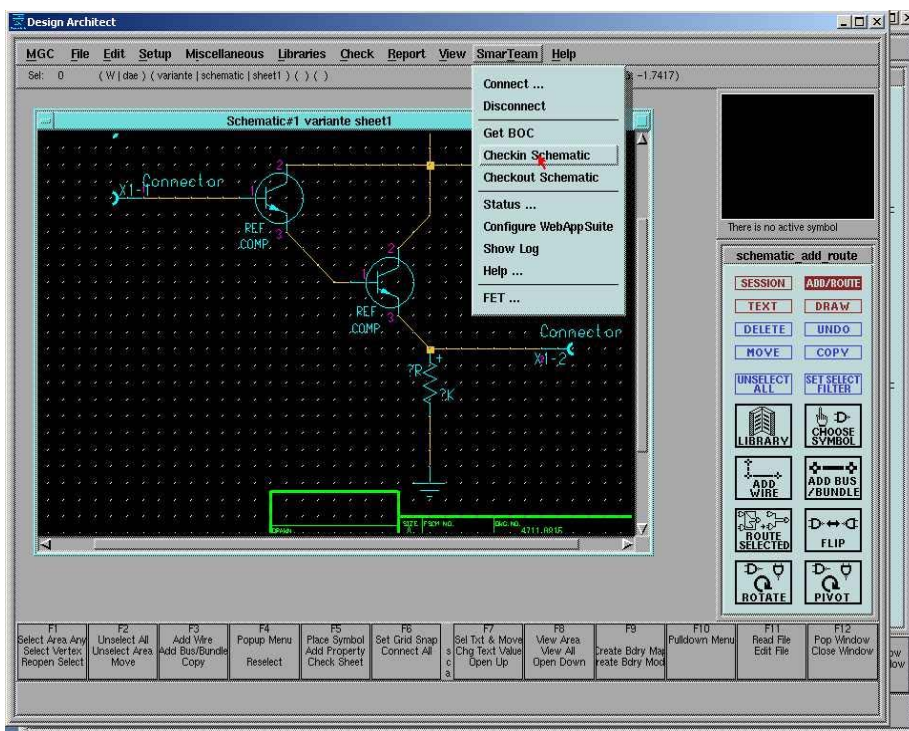


Highlights

- Create, modify and view design related information and present these through SMARTEAM PLM to collaboration partners, suppliers and remote sites
- Create, modify and view BOMs to support procurement
- Archive a design under the revision control of SmarTeam Solution including all library information
- Follow any defined design workflow and work processes
- Link EDA users to application-specific libraries and design-data management tools
- Capture and provide EDA design data, allowing unfettered access to design and status information
- Maintain relationships among EDA design objects and related enterprise data
- Control data check-in and check-out of EDA data, as well as their versioning and revision
- Manage information and execution of EDA design scripts for design consistency and workflow
- Utilize requests for, and management of new parts
- Launch custom applications transparently as a part of the check-in and check-out processes
- Map between EDA properties and SmarTeam attributes and conventions
- Update changes to attributes bi-directionally while checking items in and out
- File storage and management
- Access to and control of derived output
- Information storage and management
- Management of product development process
- Lifecycle and business process management

During the development of data systems for commercial and technical purposes only very view attention was spent on the integration of the different systems. Isolated data systems lead towards a series of problems:

- Data inconsistency between the systems
- Redundant data input and maintenance
- No centralized unified data access
- Cumbersome error-prone inter-division communication



Today, companies highly depend on their flexibility and efficiency to handle data. System integration gets more and more important. The main goals are:

- A central database to reduce data redundancy
- Connectivity and data exchange between the data systems
- Fast access
- Centralized unified data access
- Centralized accessibility



We have developed WebAppSuite Engineer Application for the integration of your EDA system data and processes with PLM with the following objectives:

- Ensuring uniform data resources for components, parts lists and documents. The information is maintained and updated centrally and synchronized via the attached systems. This reduces your overhead in keeping data resources up-to-date.
- Straightforward interface handling with data access and exchange. All required data are quickly and easily available. This accelerates your project handling processes.
- Clear and unambiguous representation of the business processes in your IT systems. This ensures efficient project management across all the departments involved.

ECAD WebAppSuite is powered by **PDMbridge®** and offers the means for SMARTEAM PLM to communicate with several EDA systems and vice versa. ECAD WebAppSuite thereby works as a mediator between both systems. The cyclic transmission of released data, which is checked for transfer, is accurate and reliable. Every event of the data transmission is logged in a log file which can be sent to a specified email address after the session.

The communication is bi-directional, but only one way at a time. The data will be formatted in a way that they are transferred in a transparent and unambiguous way to the other system and are fully accepted. ECAD WebAppSuite provides the interfaces and adaptation software for the supported EDA system and SMARTEAM PLM.

Engineer Application

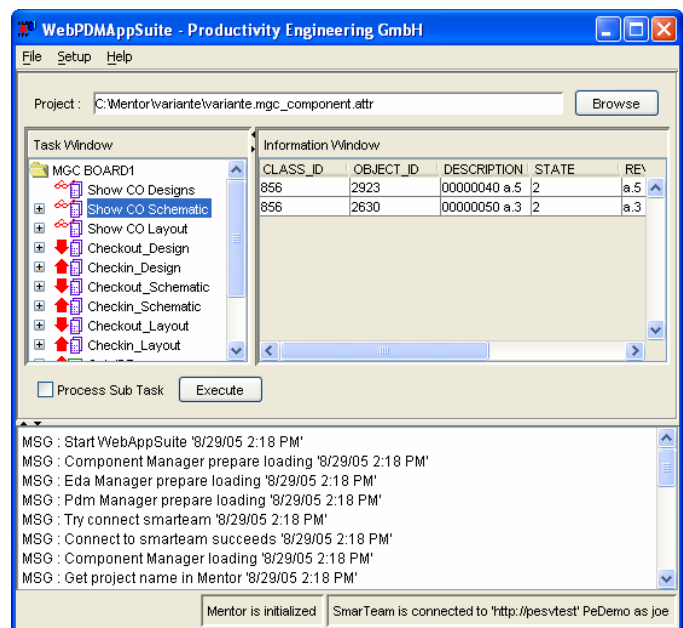
The Engineer application is designed for handling engineering data. Engineering data are typically bill-of-materials and all kind of files. The PLM functionality of the connected PLM system is fully supported, that is lifecycle management, access control, and online checks, and of course vaulting. The Engineer application provides the means to proceed effectively and gradually the development of boards. The configuration is configured and is created onto customer's request and can easily be customized on their demands at any time. The Engineer application is usually adapted for the customer.

Silent Mode

Running the ECAD WebAppSuite Engineer application with the silent option forces ECAD WebAppSuite into a non-display mode. This enables a tight integration into other UI where a simple link to a specific ECAD WebAppSuite task is needed, rather than starting a full fledged UI.

Related Products

ECAD WebAppSuite Librarian ensures data integrity of components, parts lists and documents between ECAD libraries and SMARTEAM's component database throughout the entire design process. The information is maintained and updated centrally and synchronized on a regular basis. Its straightforward interface handling with data access and exchange makes required data quickly and easily available.



Product Support

- Mentor Graphics EN (2004/2005/2006)
- Cadence SPB (15.2/15.5/15.7)
- Generic ECAD

SMARTEAM Support

- SMARTEAM V5R14-V17

Platform Support

- Solaris 10
- HP-UX 11
- Windows 2000 /XP

Productivity Engineering GmbH, Behringstraße 7, 71083 Herrenberg
T. +49 7032 2798 0 F. +49 7032 2798 29 www.pe-gmbh.com